

# The 7 Respeggt rules

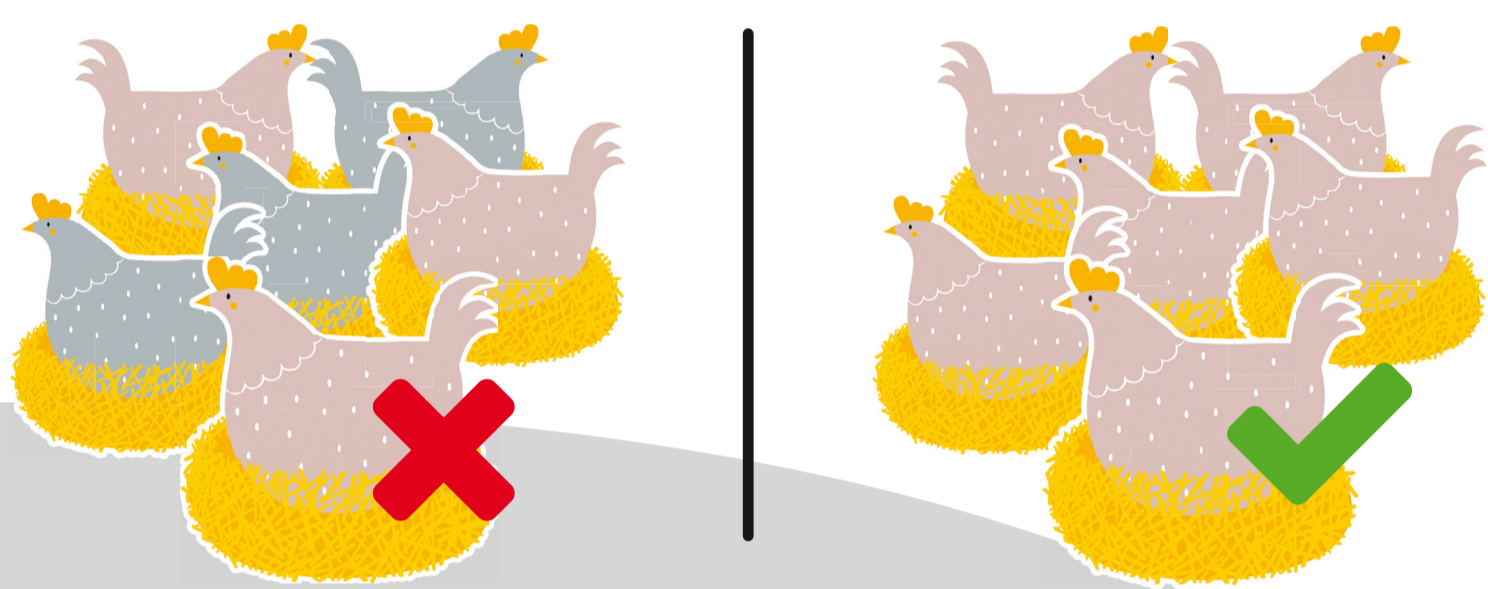
Requirements for laying hen farms



- 1 All employees must know and follow the Respeggt rules for the keeping of Respeggt laying hens.



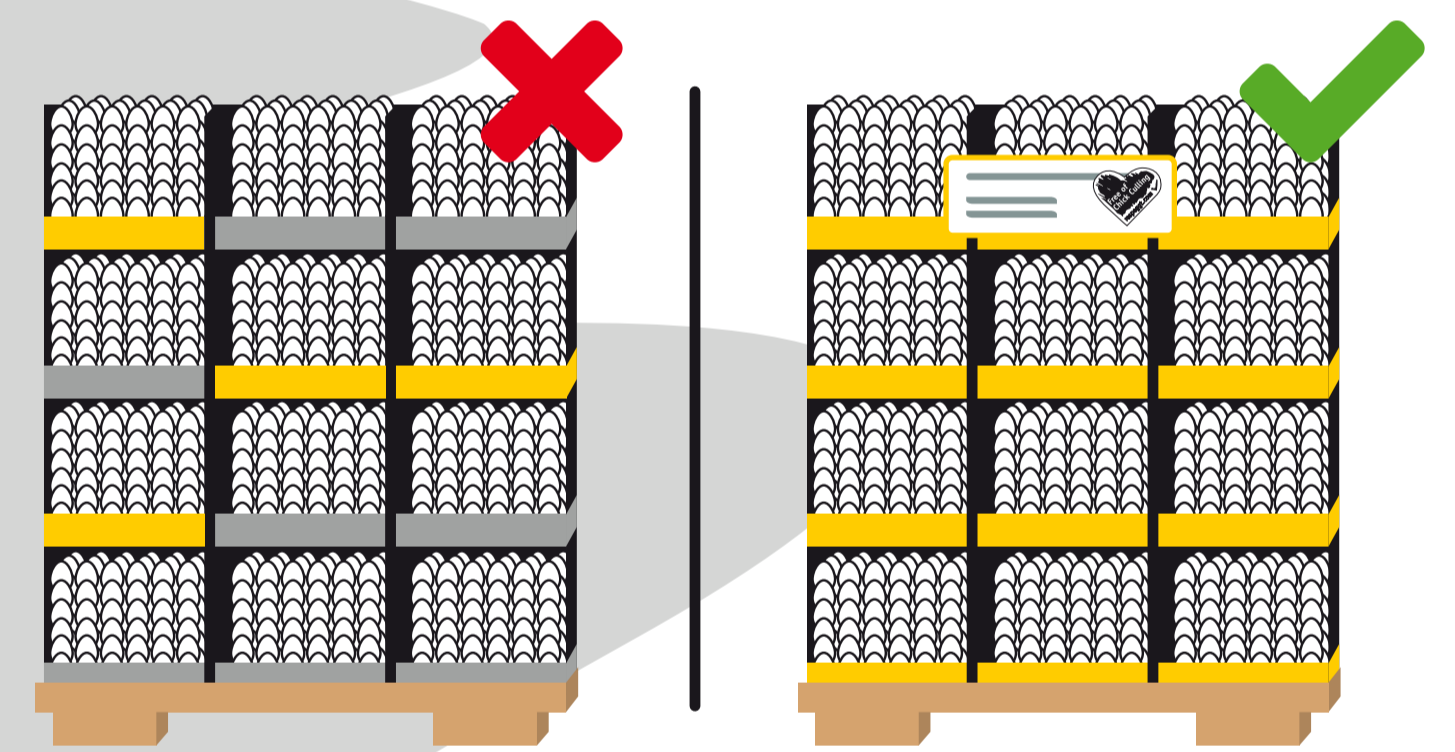
- 2 The Respeggt laying hens must **never** be mixed with conventional laying hens.



- 3 The **Respeggt flock passport** must be visibly displayed in the **barn of the Respeggt laying hens**.



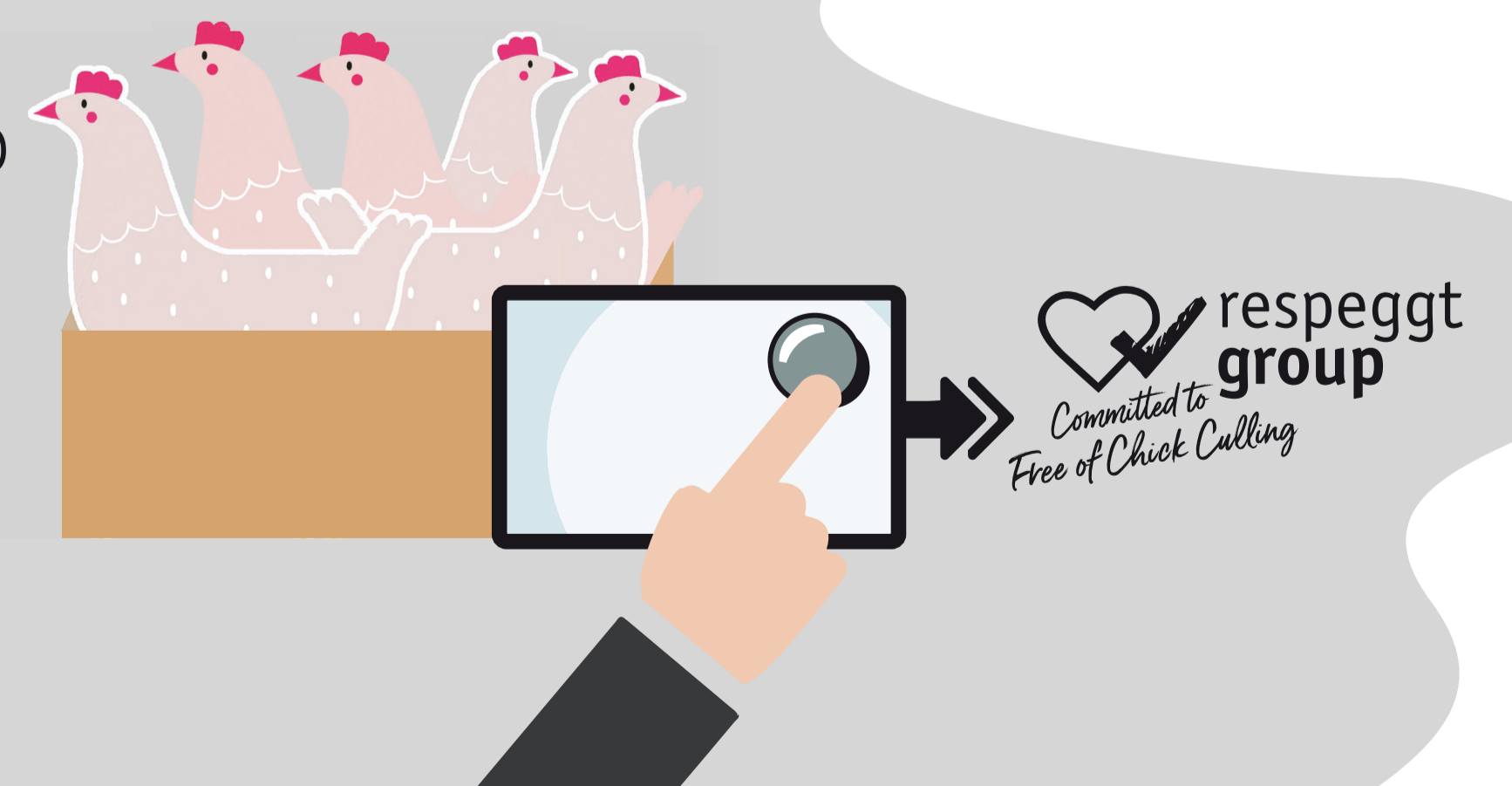
- 4 The eggs of the Respeggt laying hens must always be collected, internally transported, sorted, packed on trays and palletised **separately** from conventional eggs.



- 5 All relevant documentation, such as delivery notes, transport documents and invoices, must always be marked with the reference **Respeggt FoCC** (Free of Chick Culling) or with the Respeggt document stamp.



- 6 The packing centre must inform Respeggt group upon the **removal** of each Respeggt flock by sending an email to [data@respeggt.com](mailto:data@respeggt.com).



- 7 Employees of **Respeggt group** may visit the laying hen farm at any time.



Please contact us by sending an email to [data@respeggt.com](mailto:data@respeggt.com) if you have any questions.